

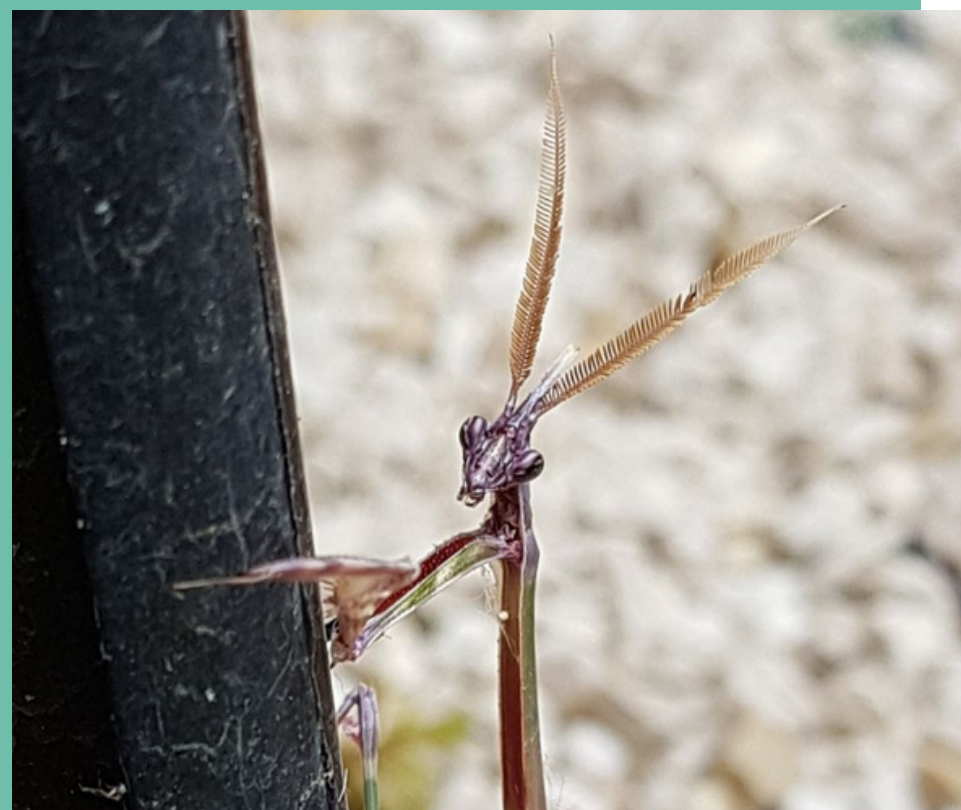
Latin name : Empusa Pennata

Size : 5 to 7 cm

Lifespan : rarely more than 1 year

Mantisfly

The empusa belongs to the same species as mantises. It can be distinguished from the more familiar praying mantis by its very tapered head and above all its comb-shaped antennae (pectinate antennae). Look at its funny head, it's almost frightening and it's probably because of this that its name was chosen. Empuse is the name of a spectre in Greek mythology that was sent to frighten travellers.



Most adult mantids can be seen from the second half of the summer (July/August). This is due to the development time required by the larvae, which do not hatch until late spring. Only the mantisfly can be seen from May onwards. Its life cycle is slightly different, with the larvae active throughout the winter and growing rapidly once the warm weather arrives. The larvae are very similar to adults; they do not go through the pupal stage, but undergo 4 to 6 moults to reach adult size. Each of these periods makes them very vulnerable.