

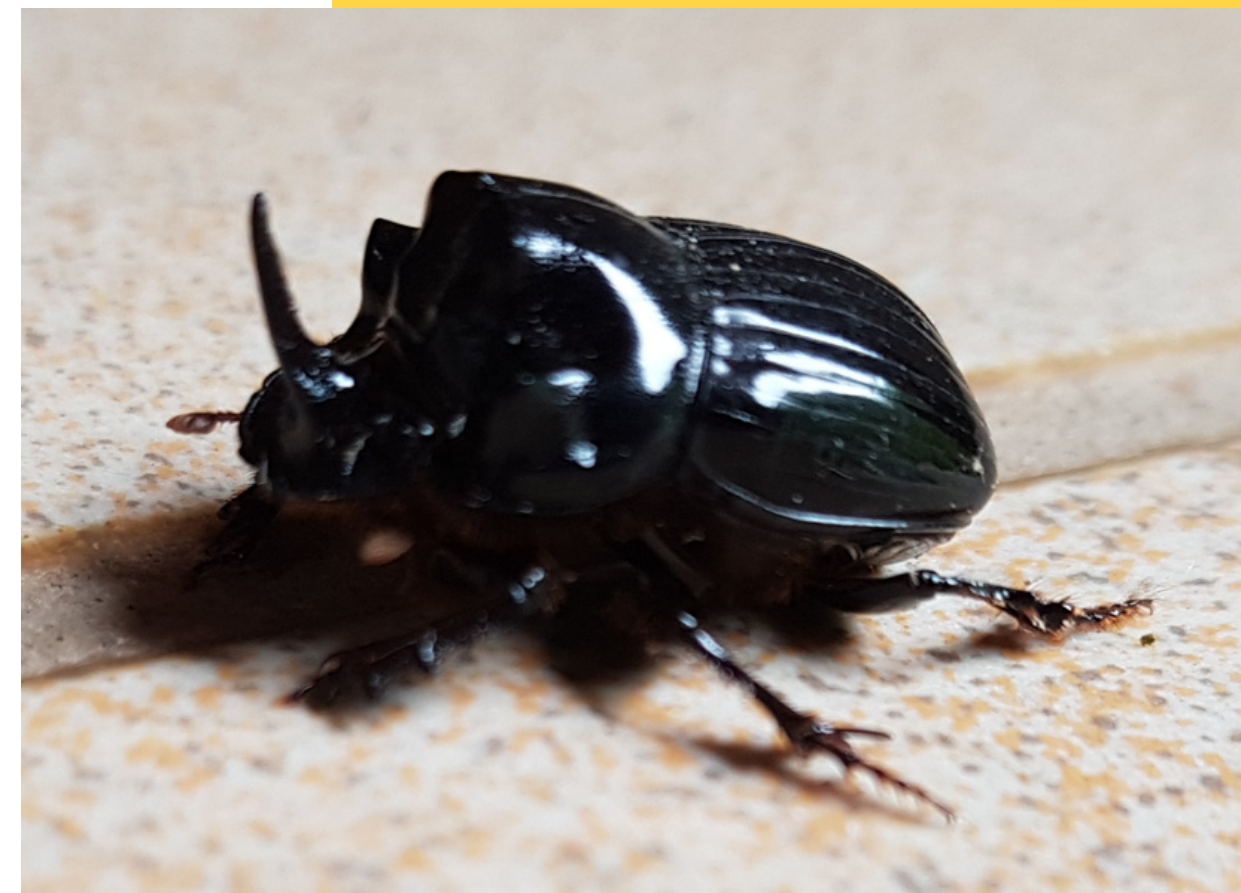
# European rhinoceros beetle

**Latin name : *Oryctes nasicornis***

**Size : 2 to 4 cm**

**Lifespan : up to 5 years**

Along with the stag beetle, the European rhinoceros beetle is the largest beetle in Europe. It can carry up to 850 times its own weight.



Beetles can be recognised by their thick, more or less rigid front wings, known as elytra. The elytra cover the hind wings, which are used for flight. They do not overlap but are joined together (ladybirds are also beetles, for example).

The rhinoceros beetle is also renowned for its astonishing longevity. These beetles can live up to 5 years, which is remarkable for an insect of this size. The secret of their longevity lies in their ability to feed on decaying wood, which is rich in essential nutrients. What's more, rhinoceros beetles have a unique adaptation that enables them to withstand extreme temperatures, which also contributes to their exceptional longevity.